

Askari Equity Fund (Ticker: ASEF)

Managed by: Askari Investment Mangement

Overview: Askari Equity Fund was established under a trust deep executed between Askari Investment Management Limited as the Management Company and Central Depository Company of Pakistan (CDC) as the Trustee on 17 November 2011. The fund is listed on Islamabad Stock Exchange. The Objective of the fund is to provide equity investors a vehicle for their long term investment needs, capable of locking in capital appreciation and securing resable dividends from listed equity securities. M/s KPMG Taseer Hadi & Co. Chartered Accountants are the statutory auditors of the fund for the period.

Category

Open-End Stock (< Rs. 1b)

MFP Ranking - 3Yrs

30-Jun-15 31-Dec-15

★★ ★★

Below Average Average

Mgt. Quality Rating

Performance Date

31-Dec-15

Risk / Return Analysis (3yrs)

Return

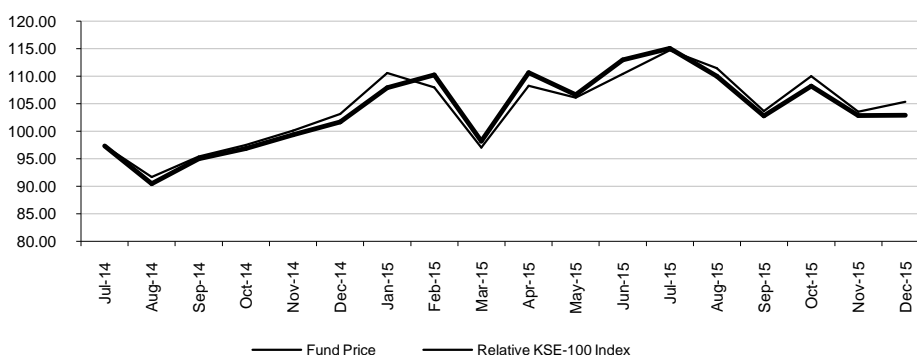
Excess Return*	34.0%
Peer Average	41.2%
Peer Maximum	68.5%
Peer Minimum	19.1%

Risk

Avg. Downside Risk	1.6%
Peer Average	1.6%
Peer Minimum	1.4%
Peer Maximum	1.8%

Peer Funds Count 7

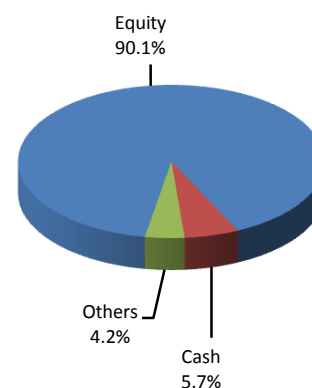
Fund Price vs. KSE-100 Index



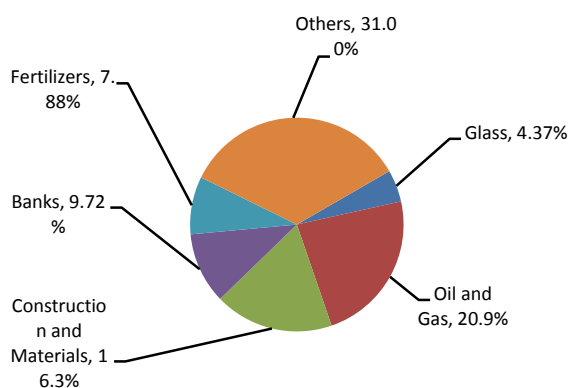
History

	31-Dec-13	30-Jun-14	31-Dec-14	30-Jun-15	31-Dec-15
MFP Ranking - 5Yrs	NA	NA	NA	NA	NA
MFP Ranking - 3Yrs	NA	NA	NA	MFR-2 Star	MFR-3 Star
MFP Ranking - 1Yr	NA	NA	NA	MFR-3 Star	MFR-3 Star
NAV (Rs.)	114.34	115.69	120.76	112.92	102.91
Fund Size (Rs. M)	121.9	102.3	125.9	157.6	250.5
Dividend (Rs.)	39.85	15.22	2.68	20.00	-
Bonus (%)	-	-	-	-	-
Revenues (Rs. M)	17.3	33.6	11.8	24.6	(17.2)
Dividend Income	2.6	5.5	2.1	4.5	6.1
Realized Cap. Gains	4.3	25.3	7.7	25.6	(0.4)
Unrealized Cap. Gains	9.4	8.6	0.1	(1.0)	(23.7)
Other Income	1.1	(5.8)	1.8	(4.4)	0.8
Expense Ratio (Annldz)	5.9%	6.4%	6.0%	6.2%	6.8%

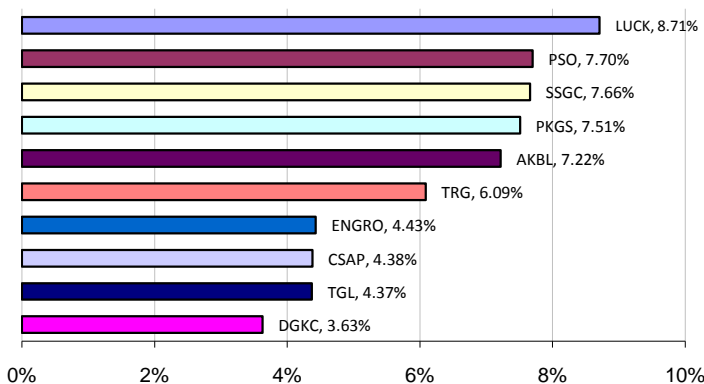
Asset Class Allocation



Portfolio Diversification Including TFC



Top 10 Company Holdings



Ranking Scale: MFR 5-Star (Top 10%), MFR 4-Star (Next 22.5%), MFR 3-Star (Next 35%), MFR 2-Star (Next 22.5%), MFR 1-Star (Last 10%)

* Calculated as the difference between fund return and risk free rate